

Tom the Biologist



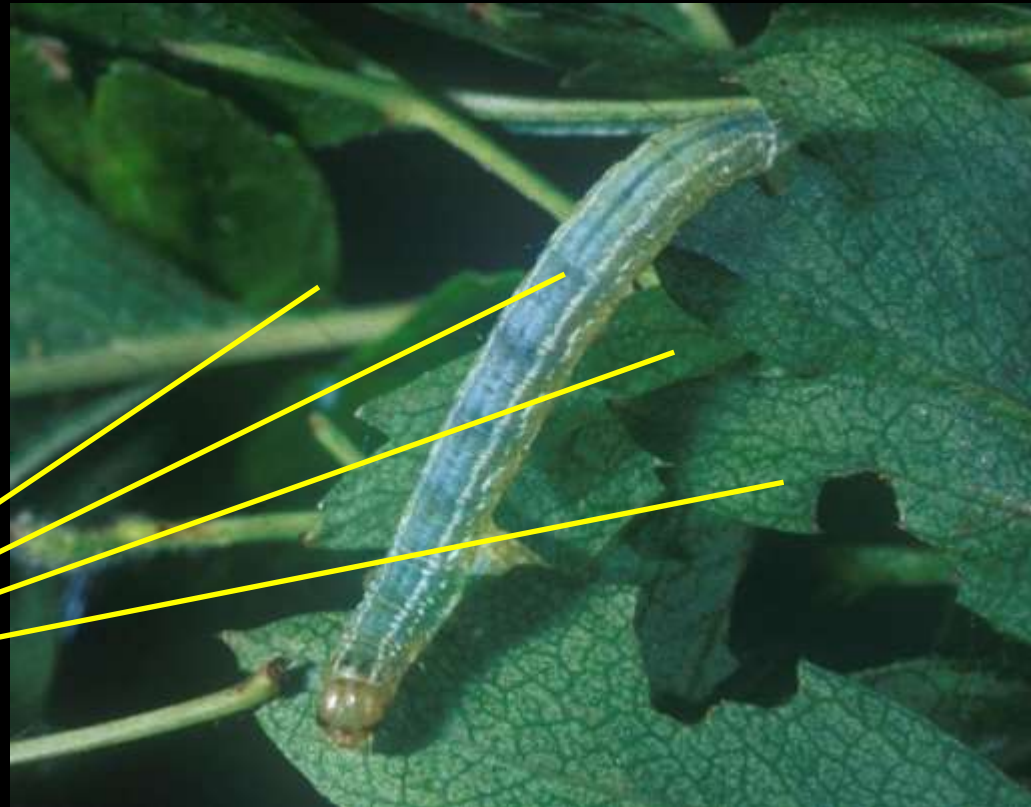
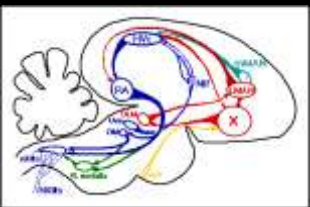
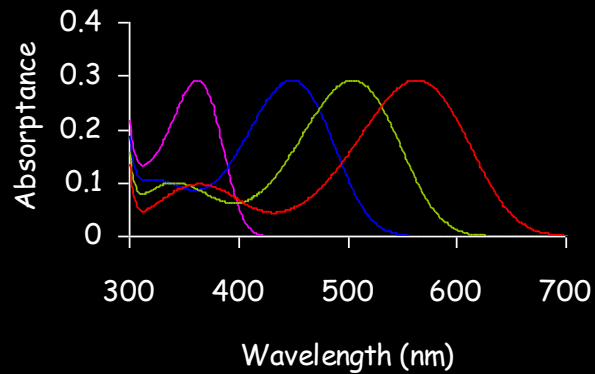


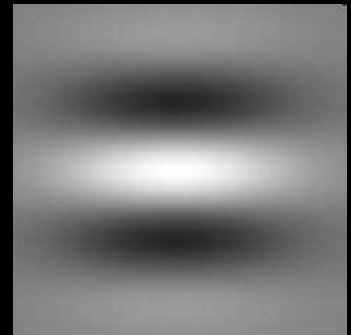
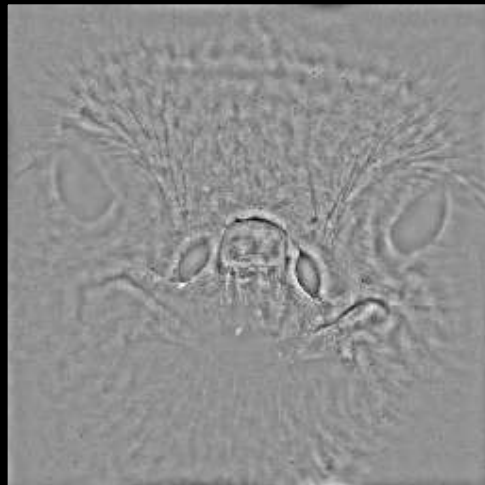
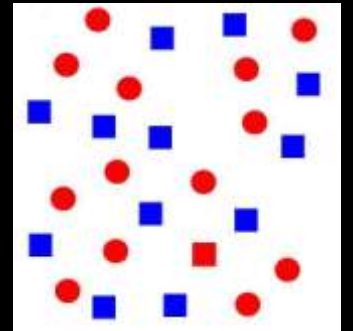
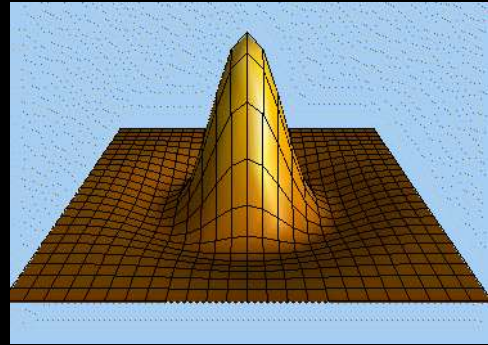
How does camouflage exploit the perceptual mechanisms of viewer(s)?



Receiver perception & cognition

- The receiver's view







letters to nature

Disruptive coloration and background pattern matching

Innes C. Cuthill¹, Martin Stevens¹, Jenna Sheppard¹, Tracey Maddocks¹, C. Alejandro Párraga² & Tom S. Troscianko²





